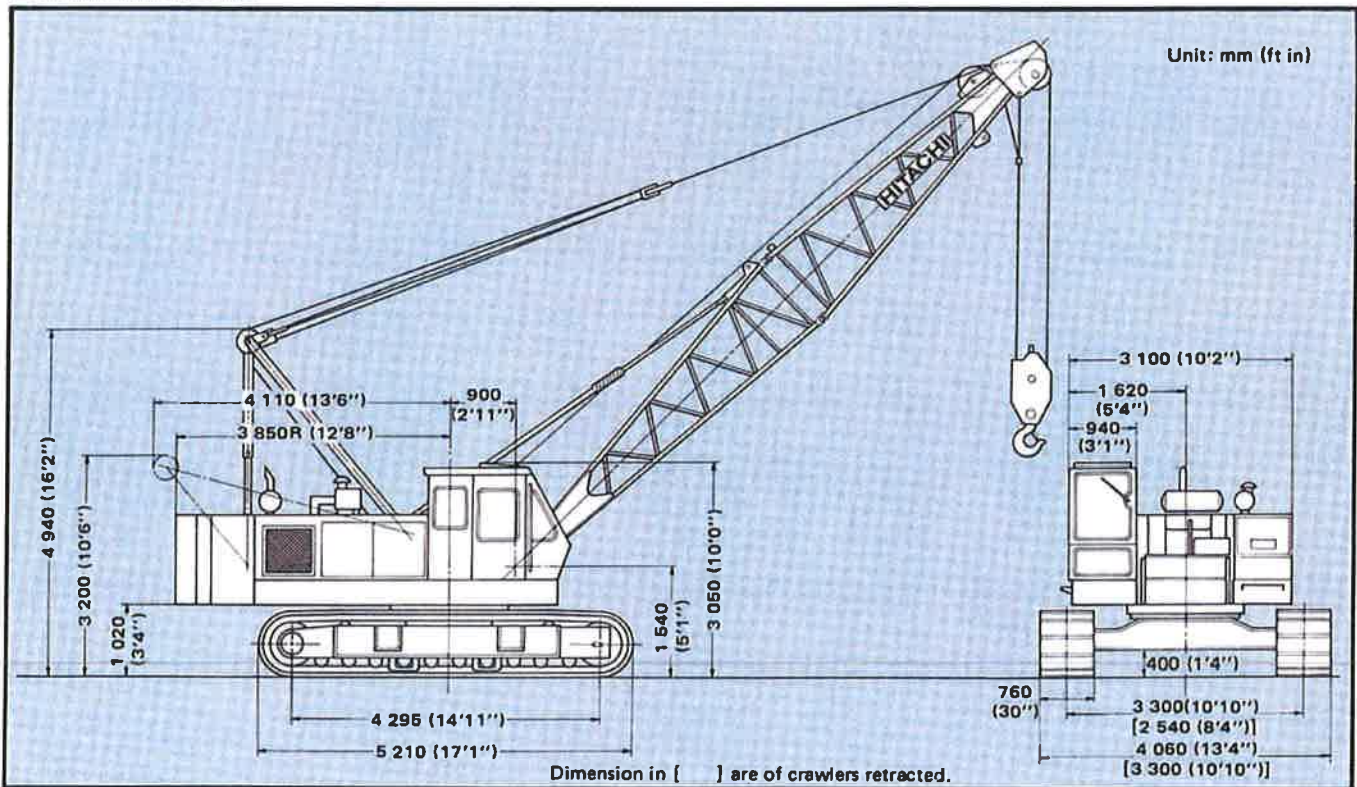




CRAWLER CRANE

With Tubular CRANE Boom

Dimensions



Specifications

Maximum rated load		40 000 kg (88 200 lb) at 3.7 m (12'2") working radius
Boom	Basic boom length	10.0 m (32'10")
	Max. boom length	46.0 m (150'11")
	Jib length	6.10 m (20'0") – 9.15 m (30'0") – 12.20 m (40'0") – 15.25 m (50'0")
	Max. boom with jib length	55.25 m (181'3") [40.0 m (131'3") boom and 15.25 m (50'0") jib]
Swing speed		0 – 3.3 min ⁻¹ (0 – 3.3 rpm)
Travel speed		0 – 1.5 km/h (0 – 0.93 mph)
Gradeability		22° (40%)
Ground pressure		0.58 bar (0.58 kgf/cm ² , 8.41 psi)
Operating weight	Equipped with basic boom, 40 000 kg (88 000 lb) capacity hook and 13 200 kg (29 100 lb) counterweight	41 000 kg (90 400 lb)
Engine	Model	HINO H06C-T <i>sold.</i>
	Rated horsepower	110 kW (150 PS) at 2 000 min ⁻¹ (2 000 rpm)

Sold

cabin - burned