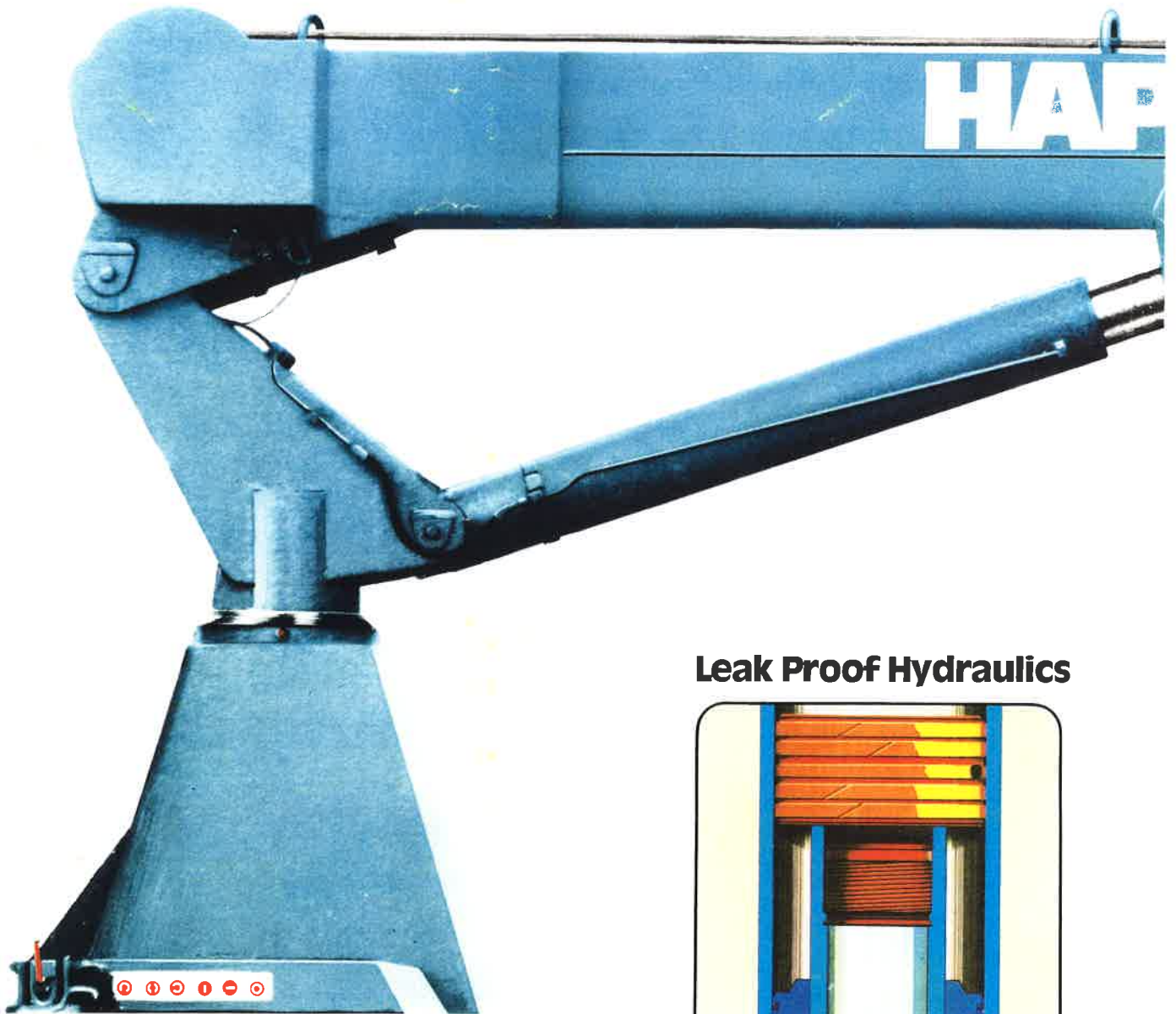


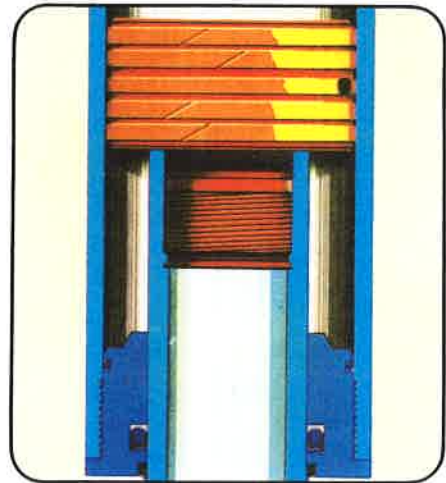
# HAP 2140 T

Operating Radius Ft./In./m  
Lifting Capacity Lbs./kg

6'6.7'  
8300



## Leak Proof Hydraulics

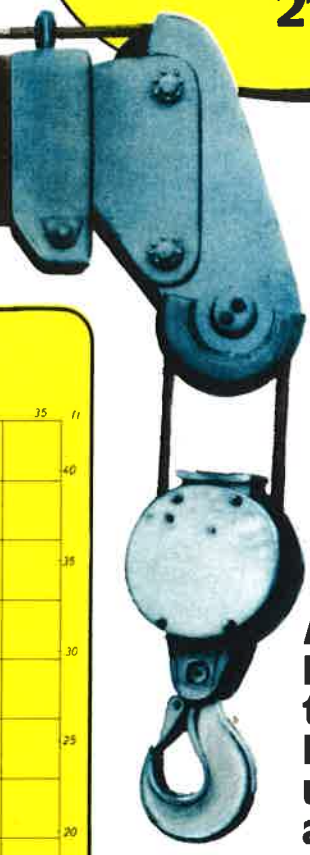


Hydraulic sealing system developed for the aircraft industry, licensed by Boeing, U.S.A., counteracts the "Dieseling Factor" experienced in all hydraulic systems under shock loads. Dieseling effect (combustion caused by compression) is responsible for seal failure, oil leakage and dangerous "boom creeping" in a truck crane. This new patented design, using Teflon/bronze guide rings and a special seal is capable of withstanding temperatures in excess of 400° C to pressures in excess of 600 bar. Identical sealing principle has met the very stringent safety requirement for commercial jet aircraft landing gear and proven more than adequate for a truck crane.



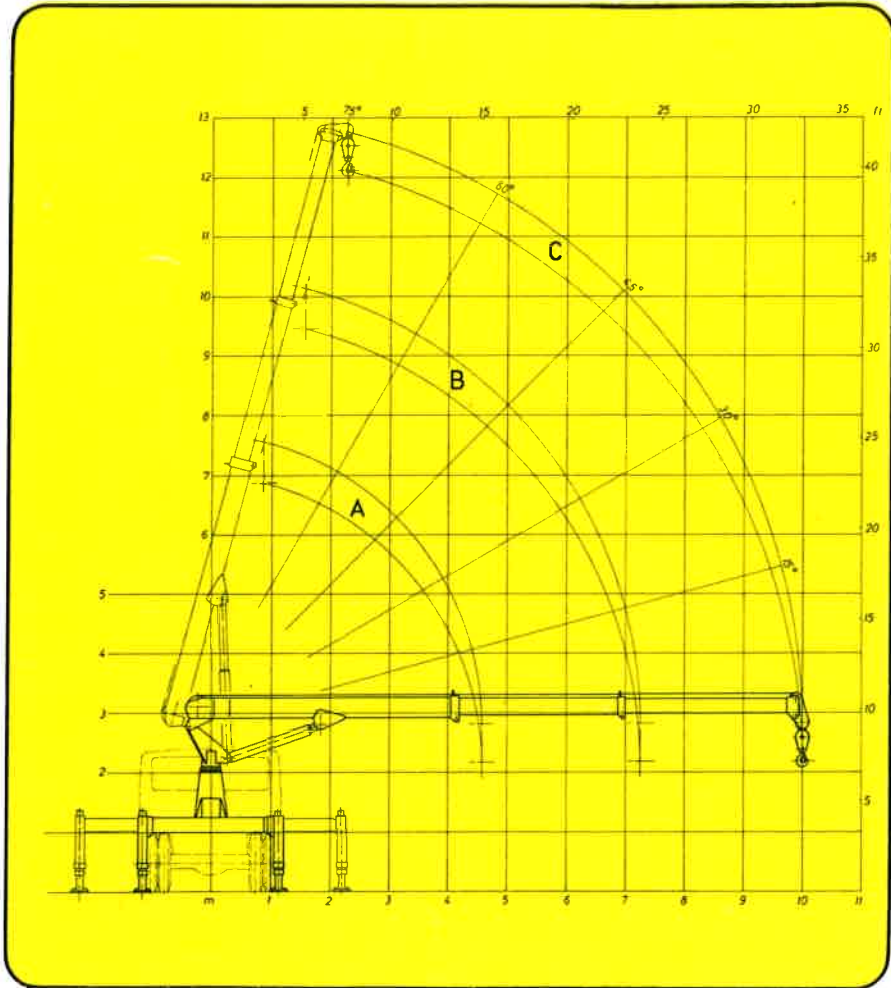
10 m standard operating radius fully hydraulic jib extensions. Lifting capacity with 10 m operating radius = 1500 kg  
 Special jibs available, e.g. 18,5 m/60'8" operating radius = 550 kg/1213 lbs

**7m**  
**2140kg**



**A strong truck loader with telescopic boom for universal applications**

The HAP 2140 T was the first from a new series of bigger and stronger HAP truck loaders with telescopic booms. These cranes, which can be mounted on medium and heavy trucks, are working today in the road-and bridge building industry, in the pre-fabricated house industry, an wreckers and everywhere else where mobile cranes are too far up market. During recent years more and more of these crane models are also operating successfully, stationary mounted, on ships, offshore platforms and drilling platforms.

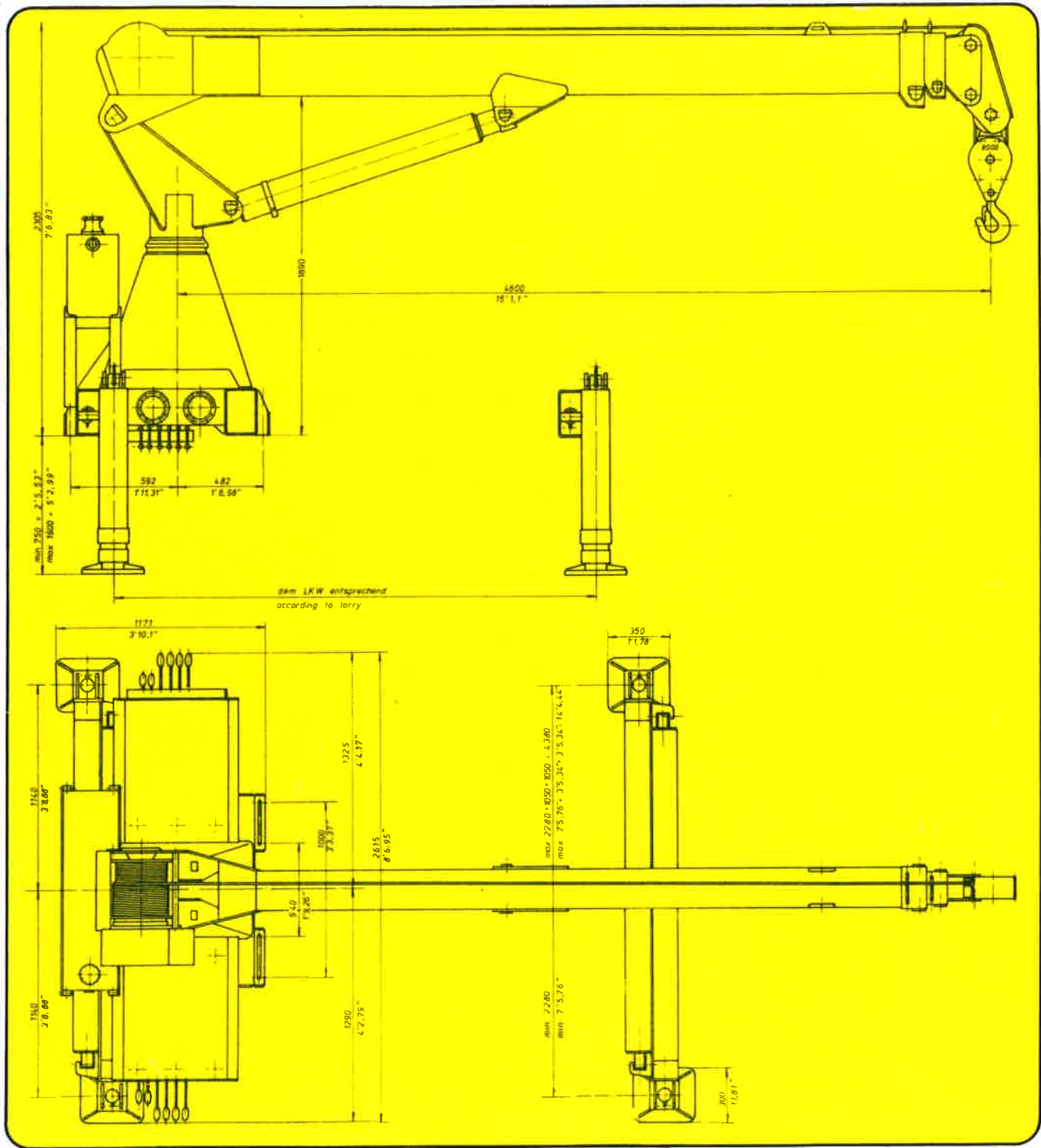


**Lifting capacity**

Reach	m	1,00	1,50	2,00	2,50	3,00	3,50	4,00	4,50	5,00	6,00	7,00	8,00	9,00	10,00
	ft.	3'3.4"	4'11"	6'6.7"	8'2.4"	9'10.1"	11'5.8"	13'1.5"	14'9.2"	16'4.8"	19'8.2"	22'11.6"	26'2.9"	29'6.3"	32'9.7"
Load	kg	8000	8000	7000	6000	5000	4300	3750	3300	3000	2500	2140	1870	1670	1500
	lbs	17650	17650	15450	13250	11000	9500	8300	7300	6600	5500	4700	4100	3700	3300

**Boom extension**

		0°	15°	30°	45°	60°	75°
<b>A</b>	4,60 m - 15'1.1"	kg	3200	3200	3800	4500	6000
		lbs	7050	7050	8400	9900	13250
<b>B</b>	7,25 m - 23'9.4"	kg	2070	2070	2300	2900	4000
		lbs	4600	4600	5050	6400	8800
<b>C</b>	10,00 m - 32'9.7"	kg	1500	1500	1700	2100	3000
		lbs	3300	3300	3750	4650	6600



**Lifting moment**

15000 mkg = 147 kNm = 108500 ft-lbs for all boom positions up to 10 m (32'10") reach

**Max. lifting capacity**

8000 kg (17600 lbs) at 1.80 m (5'11") reach  
6000 kg (13200 lbs) at 2.50 m (3' 2") reach

**Boom system**

Boom and two extensions, hydraulically extended by two double-acting cylinders

**Maximum working radius**

standard crane 10 m (32'10")  
with auxiliary jib 18,5 m (60'8")

**Angle of boom** Min. - 15° Max. + 75°

Max. height of hook above crane base 11 m (36'1") and 17 m (55'9") with auxiliary jib

**Winch** Type: planetary winch driven by axial piston motor. Max. line pull 2000 kg (4400 lbs)

**Rope** Diameter 12 mm (1/2 in.)  
Length 74 m (243')  
Pulley with fourfold fall

**Slewing system** consisting of twin slewing cylinders giving a torque of 3500 mkg = 34 kNm = 25300 ft-lbs. Slewing angle 375°

**Stabilizer system** Stabilizers with hydraulic lateral extensions, vertically adjustable in two stages, one hydraulically and one manually. The manual part is to adjust stabilizers to individual chassis heights. A separate set of stabilizers is available to be able to achieve also sufficient stability when crane is fitted to the lighter range of trucks. This set of stabilizers is adjustable in the same way as the stabilizers fitted to the standard unit. Stabilizers extended max. 4.38 m (14'4")

**Valves** Spool type directional control valve with 3-way-flow control and built-in safety and anti-cavitation valves

**Working pressure** 215 bar.

**Hydraulic cylinders** All double-acting, piston rods and slewing cylinder tubes hard chromium plated.

**Sealing system** Seals and guide rings of special Teflon bronze

**Safety devices** Overload prevention system, winch rope overload protection, winch flow-control lowering valve, cylinder pipebreak valves and lowering brake valves.

**Recommended pump flow rate**  
45 l/min = 10 Imp. gallons

**Operating speed**

at a pump flow rate of 45 l/min  
- hook (with fourfold fall) 10 m/min = 33 ft per min  
- extension from 4.60 m (15') to 10.00 m (32'10") in 36 sec.

- elevation from 0° to 75° in 24 sec.  
Separate oil tank with a capacity of max. 150 litres (40 Imp. gallons)

**Weight** Crane with standard stabilizers approx. 3250 kg (7200 lbs). Winch approx. 250 kg (550 lbs). Separate stabilizer system approx. 700 kg (1540 lbs).