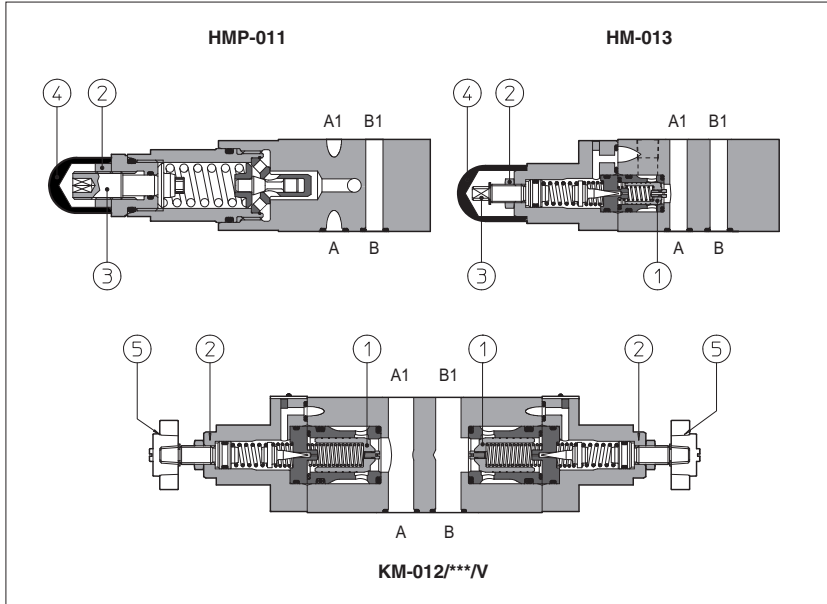


# Modular relief valves type HMP, HM, KM

ISO 4401 sizes 06 and 10



HMP are direct operated pressure relief valves.  
HM and KM are double stage pressure relief valves with balanced poppet ①.

The pressure adjustment is operated by loosening the locking nut ② and turning the screw ③ protected by cap ④. Optional versions with setting adjustment by handwheel ⑤ instead of the screw are available on request. Clockwise rotation increases the pressure.

HMP = ISO 4401 size 06 interface; max flow: 35 l/min; max pressure up to 350 bar.

HM = ISO 4401 size 06 interface; max flow: 60 l/min; max pressure up to 350 bar.

KM = ISO 4401 size 10 interface; max flow: 120 l/min; max pressure up to 350 bar.

Valves designed to operate in hydraulic systems with hydraulic mineral oil or synthetic fluid having similar lubricating characteristics.

<b>1</b>	<b>MODEL CODE</b>	<b>HM</b>	-	<b>011</b>	/	<b>210</b>		<b>IV</b>		<b>**</b>		<b>/*</b>	
Modular pressure relief valve size:		HMP = 06		HM = 06		KM = 10				Series number		Synthetic fluids: WG = water glycol PE = phosphate ester	
Configuration, see section 2		Options: IV = setting adjustment by handwheel instead of a grub screw protected by cap Only for HMP: R = reduced leakage for special applications VF = regulating knob VNS = regulating knob with safety locking		Pressure range		for HMP: 50 = 2÷ 50 bar 100 = 3÷100 bar 210 = 10÷210 bar 350 = 15÷350 bar		for HM and KM: 50 = 4÷ 50 bar 100 = 5÷100 bar 210 = 5÷210 bar 350 = 5÷350 bar					

## 2 HYDRAULIC CHARACTERISTICS

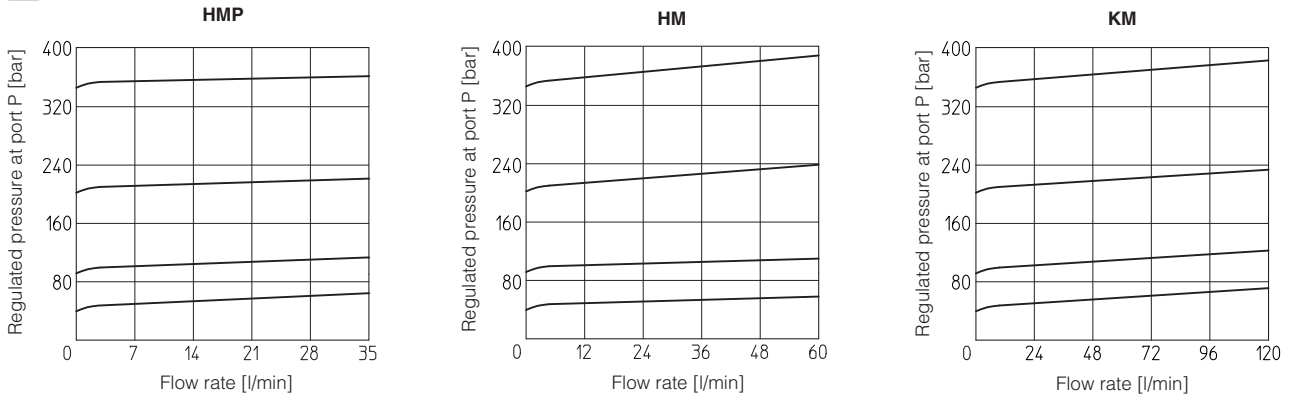
Hydraulic configuration

Valve model		HMP	HM	KM
Max flow	[l/min]	35	60	120
Pressure range	[bar]	2÷50; 3÷100; 10÷210; 15÷350		
		4÷50; 5÷100; 5÷210; 5÷350		

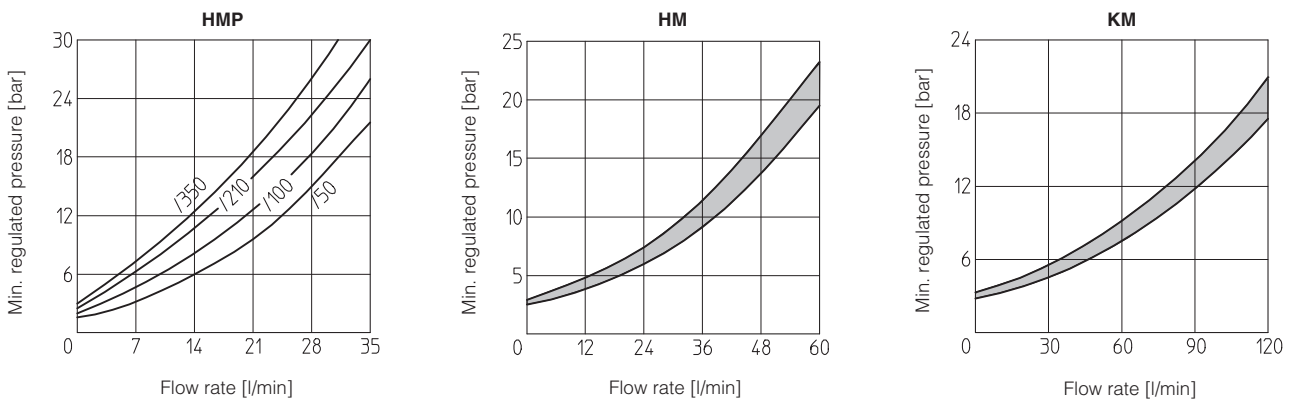
**3 MAIN CHARACTERISTICS OF MODULAR PRESSURE RELIEF VALVE TYPE HMP, HM, KM**

Assembly position / location	Any position
Subplate surface finishing	Roughness index $\sqrt{0.4}$ , flatness ratio 0,01/100 (ISO 1101)
Ambient temperature	-20°C to +70°
Fluid	Hydraulic oil as per DIN 51524 ... 535; for other fluids see section <b>1</b>
Recommended viscosity	15 ÷ 100 mm <sup>2</sup> /s at 40°C (ISO VG 15 ÷ 100)
Fluid contamination class	ISO 19/16, achieved with in line filters at 25 µm value and $\beta_{25} \geq 75$ (recommended)
Fluid temperature	-20°C +60°C (standard and /WG seals)    -20°C +80°C (/PE seals)

**4 REGULATED PRESSURE VERSUS FLOW DIAGRAMS** (Based on mineral oil ISO VG 46 at 50°C)

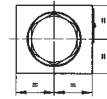
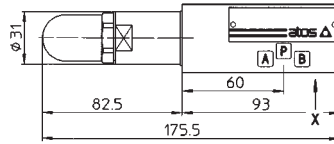
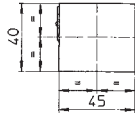


**5 MINIMUM PRESSURE VERSUS FLOW DIAGRAMS** (Based on fluid viscosity of 25 mm<sup>2</sup>/s at 40°C)



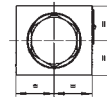
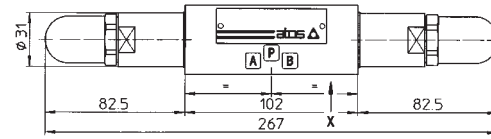
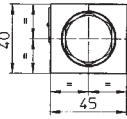
**6 INSTALLATION DIMENSIONS OF HMP VALVES [mm]**

**HMP-011**



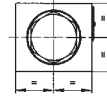
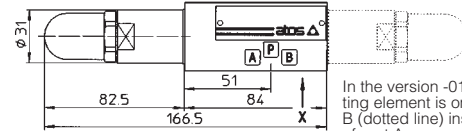
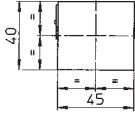
Mass: 1,4 Kg

**HMP-012**



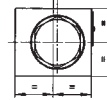
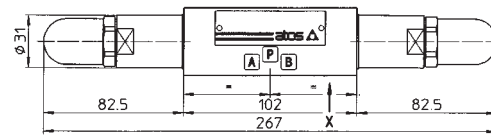
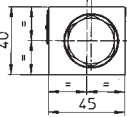
Mass: 1,7 Kg

**HMP-013  
HMP-014**



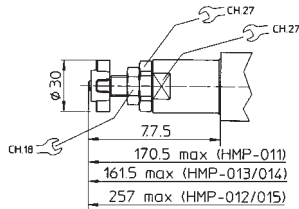
Mass: 1,2 Kg

**HMP-015**



Mass: 1,7 Kg

**Adjustment device for option /V**

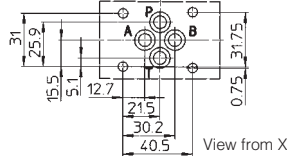


**ISO 4401: 2005**

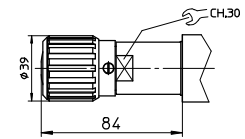
**Mounting surface: 4401-03-02-0-05**

Diameter of ports A, B, P, T:  $\varnothing = 7,5$  mm

Seals: 4 OR 108



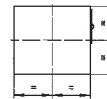
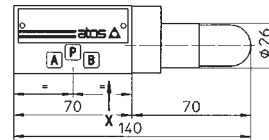
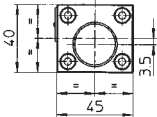
**Adjustment device for option /VF and /VS**



Fastening bolts: n° 4 socket head screws M5. The length depends on number and type of modular elements associated.

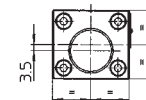
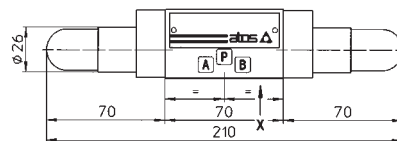
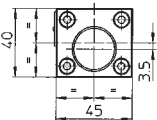
**7 INSTALLATION DIMENSIONS OF HM VALVES [mm]**

**HM-011  
HM-014**



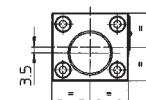
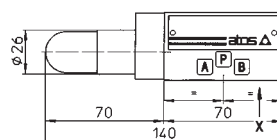
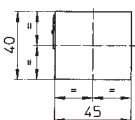
Mass: 1,1 Kg

**HM-012  
HM-015**



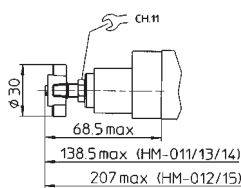
Mass: 1,3 Kg

**HM-013**



Mass: 1,1 Kg

**Adjustment device for option /V**

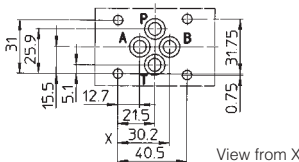


**ISO 4401: 2005**

**Mounting surface: 4401-03-02-0-05**

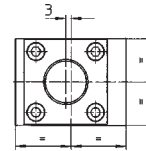
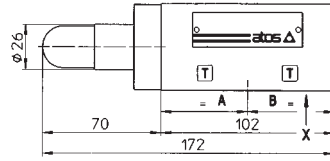
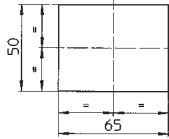
Diameter of ports A, B, P, T:  $\varnothing = 7,5$  mm

Seals: 4 OR 108



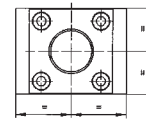
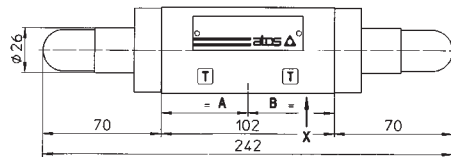
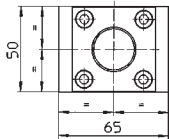
Fastening bolts: n° 4 socket head screws M5. The length depends on number and type of modular elements associated.

KM-011



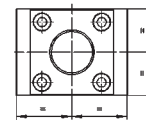
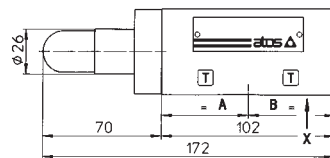
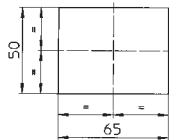
Mass: 2,5 Kg

KM-012



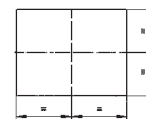
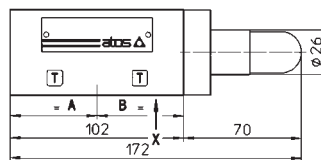
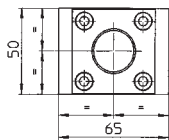
Mass: 2,8 Kg

KM-013



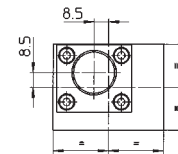
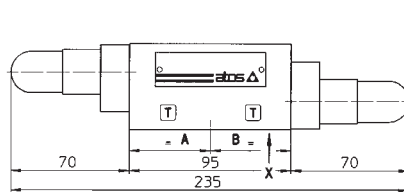
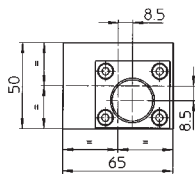
Mass: 2,5 Kg

KM-014



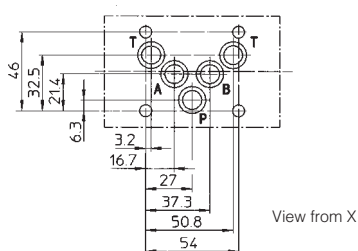
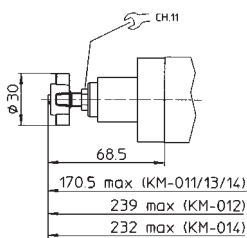
Mass: 2,5 Kg

KM-015



Mass: 2,5 Kg

Adjustment device for option /V



ISO 4401: 2005

Mounting surface: 4401-05-04-0-05

Diameter of ports A, B, P, T:  $\phi = 11,2$  mm

Seals: 5 OR 2050

Fastening bolts: n° 4 socket head screws M6. The length depends on number and type of modular elements associated.