

Ebmpapst K2E220-RA38-01 AC centrifugal blæser - RadiCal



Varenr.: 22362

Lokation: 1D

Stand: Ny

Længde: 270 mm

Bredde: 270 mm

Højde: 92 mm

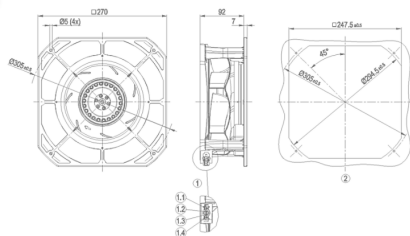
Egenvægt: 2 kg

Mærke: Ebmpapst

Beskrivelse

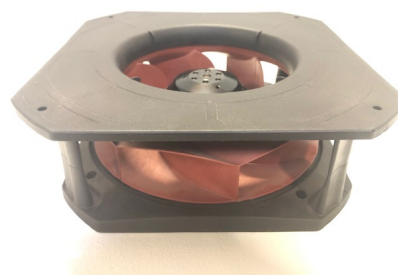
Tekniske spec. motor størrelse 68 - størrelse 220 mm - PA plastik - Antal vinger 7 - rotation med uret - IP44 - max motor temp. + 80 °C - minimum motor temp. - 40 °C - kugleleje - nominel data. fase 1~ - volt AC - 230V - 50 Hz - termisk overbelastningsbeskytter - overensstemmelse med EN 60335-1/CE standarder - CCC/EAC godkendt - CE - antal - pris pr. stk.

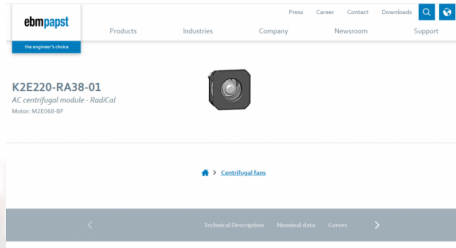
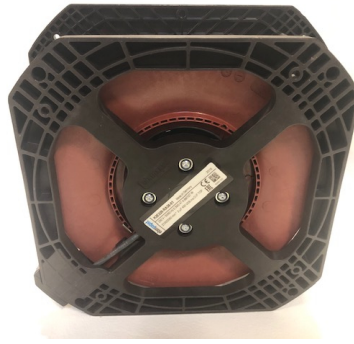
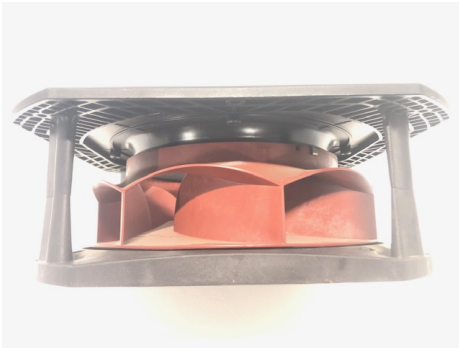
Galleri



Product drawing

- 1 tyco coded plug system
- 4-pole connector housing tyco 926305-7
- 4x plug pin tyco 926 885-1
- Making connector (not included in scope of delivery)
- 4-pole connector housing tyco 926298-6
- 4x socket tyco 926 884-1
- 1.1 PE
- 1.2 L
- 1.3 N + capacitor
- 1.4 Capacitor
- (capacitor wired internally)
- 2 Mounting dimensions





Technical Description

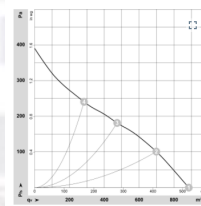
Weight	2 kg
Motor size	68
Size	220 mm
Rotor surface	Painted black
Impeller material	PA plastic
Housing material	PA plastic
Number of blades	7
Direction of rotation	Clockwise, viewed toward rotor
Degree of protection	IP44 / installation- and position-dependent as per EN 60034-5
Insulation class	"F"
Moisture (F) / Environmental (H) protection class	H1
Max. permitted ambient temp. for motor (transport/storage)	+ 80 °C
Min. permitted ambient temp. for motor (transport/storage)	- 40 °C
Installation position	Shaft horizontal or rotor on bottom; rotor on top on request
Condensation drainage holes	On rotor side
Mode	S1
Motor bearing	Ball bearing

Touch current according to IEC 60950 (measuring circuit Fig. 4, TN system)	< 0,75 mA
Electrical hookup	Plug
Motor protection	Thermal overload protector (TOP) internally connected
with cable	Variable
Protection class	I (with customer connection of protective earth)
Motor capacitor according to EN 60252-3 in safety protection class	S0
Conformity with standards	EN 60335-1 / CE
Approval	CCC / EAC

Nominal data

Phase	1-
Type of voltage	AC
Nominal voltage	in V 230
Frequency	in Hz 50
Type of data definition	maximum load
Valid for approval / standard	CE
Speed	in min ⁻¹ 2100
Power input	in W 88
Current draw	in A 0,39
Starting current	in A 0,51
Motor capacitor	in µF 2
Capacitor voltage	in V 450
Capacitor standard	50
Min. back pressure	in Pa 0
Min. ambient temperature	in °C -25

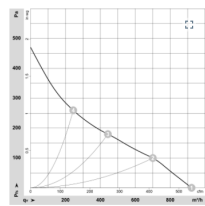
Curves



Air flow 50 Hz

Measured values				
n	P ₁	I	I _{pA}	I _{pA}
in min ⁻¹	in W	in A	in dB(A)	in dB(A)
1	2350	80	0,36	59
2	2231	86	0,38	54
3	2100	88	0,39	52
4	2003	85	0,38	55

Curves



Air flow 60 Hz

Measured values				
n	P ₁	I	I _{pA}	I _{pA}
in min ⁻¹	in W	in A	in dB(A)	in dB(A)
1	2450	102	0,45	60
2	2212	106	0,46	54
3	2050	107	0,47	51
4	2232	105	0,45	56

Air flow 60 Hz