

P&H Diesel Model 387C-18 motor



Varenr.: 20001

Stand: Brugt

Længde: 1750 mm

Bredde: 1200 mm

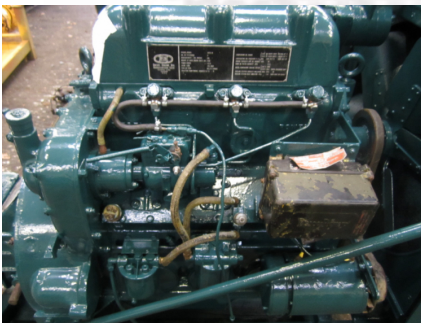
Højde: 1500 mm

Egenvægt: 1350 kg

Beskrivelse

3 cyl.

Galleri



ENGINE MODEL	387C-18
NO. OF CYLINDERS	3
DISPLACEMENT - CU. INCHES	261
WEIGHT OF BARE ENGINE (DRY) LBS.	1350
FIRING ORDER	1-3-2
VALVE LASH	.012 COLD
TYPE OF FUEL	NO. 2 D GRADE
INJECTION PUMP-TIMING - DEGREES B.T.C.	16

LUBRICATING OIL GRADE	{ SAE 20 HEAVY DUTY - BELOW 32° F. SAE 30 HEAVY DUTY - ABOVE 32° F.
LUBRICATING OIL PRESSURE P. S. I., MIN.	LOW IDLE 15 HIGH IDLE 40
ENGINE CAPACITY LUB. OIL CHANGE - QTS.	19
LUBE OIL FILTER CAPACITY - QTS.	2 1/2
WATER TEMPERATURE-COOLING SYSTEM	{ 165° F. MIN. 210° F. MAX. (WITH PRESSURE CAP)
COOLING SYSTEM CAPACITY INCLUDING RAD. - QTS.	28
COOLING SYSTEM RUST INHIBITOR - PTS.	1 1/2 (NOX RUST OR EQUAL)

