

Liebherr LR632 - til ophug



Varenr.: 10002826

Serienummer: 393-2250

Stand: Brugt

Egenvægt: 22000 kg

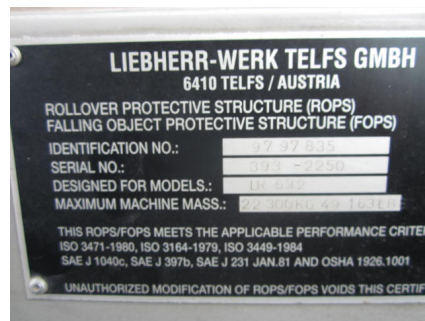
Mærke: Liebherr

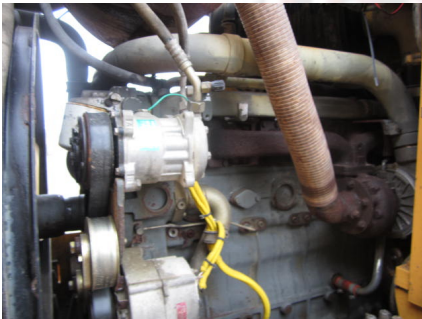
Timer: 11867

Beskrivelse

4 i 1 skovl - centralsmørring - ingen fremdrift på højre bånd. Solgt: køermotorerne, venstre og højre side track frame, 2 joystick, instrumentpanel + motor.

Galleri





| IMPORTANT ENGINE INFORMATION | |
|--|--------------|
| ENGINE NUMBER | 2000 02 2738 |
| ENGINE DISPLACEMENT (LITERS) | 3.68 |
| INJECTION TIMING (* BTDC) | 18.5 |
| FUEL RATE (CUBIC mm/STROKE) | 10 |
| INTAKE VALVE LASH (mm) | 0.25 |
| EXHAUST VALVE LASH (mm) | 0.30 |
| POWER HP | 177 |
| POWER KW | 132 |
| RPM | 1800 |
| ENGINE FAMILY | YLHA19.96ASA |
| ENGINE CERTIFIED TO OPERATE ON COMMERCIAL AVAILABLE DIESEL FUEL | |
| THIS ENGINE CONFORMS TO 2000 | |
| U.S. EPA AND CALIFORNIA ARB REGULATION FOR NONROAD COMPRESSION-IGNITION ENGINES. | |
| CODE | 988390 |
| REBUILT ENGINE | 988390 |
| LIEBHERR MACHINES BULLE S.A. MADE IN SWITZERLAND | |



| | | | |
|---|----------|---------------------------|--|
| Type | LR 632 | Zul. Achslast vorn | |
| Type | | Perm. axle weight front | |
| Type | | Charge admis. sur ess. AV | |
| Fig.-Ident.-Nr. | 33-2250 | Zul. Achslast hinten | |
| Serial no. | | Perm. axle weight rear | |
| N° de série | | Charge admis. sur ess. AR | |
| Ul. Ges. Gew. | 22000 kg | Motorleistung | |
| Perm. total weight | | Engine power | |
| Max. admissible | | Puissance moteur | |
| Hersteller | 2000 | Höchstgeschwindigkeit | |
| Year of manufacture | | Max. speed | |
| Année de fabrication | | Vitesse maxi. | |
| LIEBHERR - WERK TELFS GMBH | | | |
| Hans Liebherr - Straße 35, A - 6410 TELFS | | | |
| LIEBHERR | | | |