

IFA motor 12 cyl. Tatra Diesel 930 ex. Army Dok-M



Varenr.: 20441

Lokation: 15A

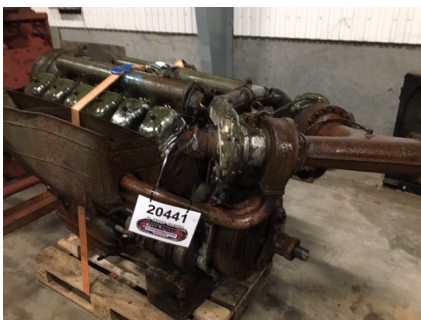
Stand: Brugt

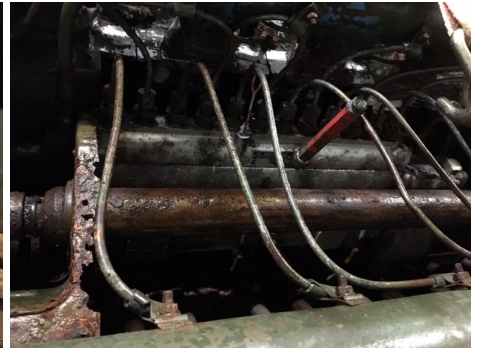
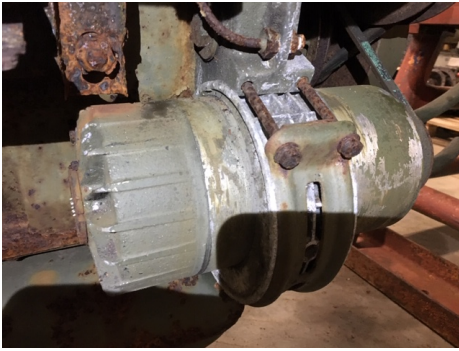
Mærke: IFA

Beskrivelse

få timer - sidder fast

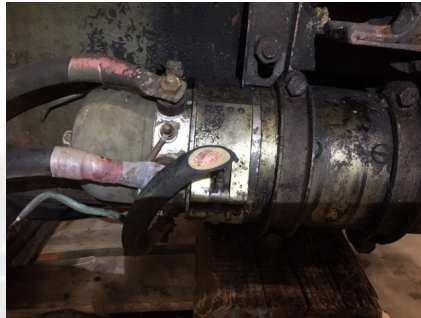
Galleri





FUEL CARRIER VEHICLE

Fuel Carrier Vehicle developed on BEML-Tata VVA. Will be used to carry Xyidine i.e. 'V' fuel. This is a part of PRITHVI ground system deployed in Missile Maintenance Battery for charging the missiles.



Specifications

Engine T3 836 54, 12-cylinder, V-type, Air-cooled, Multi-fuel turbocharged with direct fuel injection
Horsepower 265 kW (355 HP) @ 2200 rpm
Transmission Synchronesh type, 10 Forward, 2 Reverse, gear shifting by manual, mechanical with pneumatic booster
Axles Swing half axles separably sprung
Suspension Leaf springs and telescopic shock absorbers on front axles and leaf springs on rear axles
Tyres Tubed type, size - 15.00 x 21 - 8 Nos.
Speed 80 kmph max.

ENTREPRENØR
BRANDE