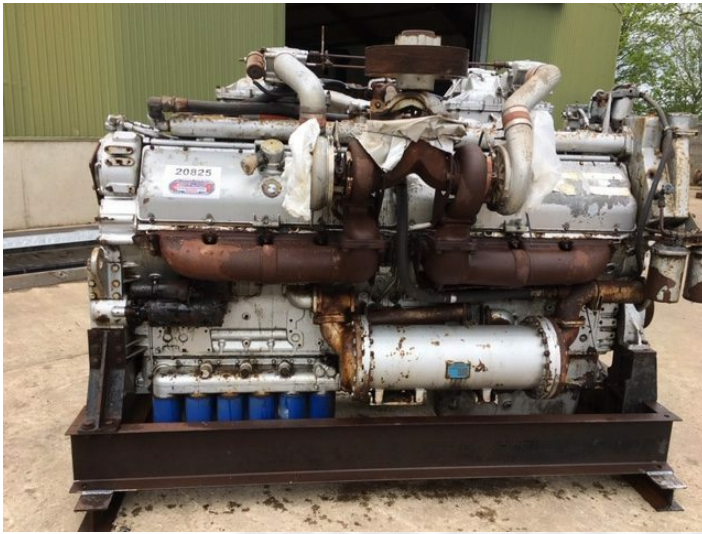


# Detroit GM 16V Type 149T1 motor



Varenr.: 10000496 - 20825

Stand: Brugt

Længde: 2850 mm

Bredde: 1650 mm

Højde: 2300 mm

Egenvægt: 5500 kg

Mærke: Detroit

## Beskrivelse

1826 Hp - 1343 Kw/1900 omdr. - 4930 kg - this engine is designed to operate 1850 rpm - max. 1940 rpm - Unit 16E0009250 S.O. - 9A 94966 - model 91637301 - spec. repower - blok no. 16E9250 - 9163-7301 - flywheel housing pilot 646 - SAE 0 - flywheel housing bolt cirkel diam. 680 mm - flywheel pilot diam. 570 mm - flywheel bolt cirkel diam. 542 mm

## Galleri

