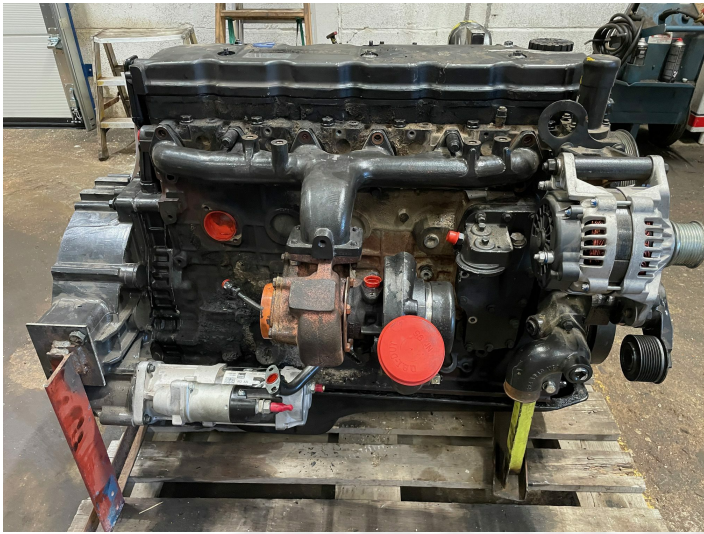


# Cummins QSB6.7 engine - for parts or rebuilt



**PRODUCT NO.:** 24588

**Serial no.:** 8CEXL0409AAC

**Location:** 10B

**Condition:** Used

**Horsepower:** 160 hp

**RPM:** 2500

**Length:** 1200 mm

**Width:** 800 mm

**Height:** 1300 mm

**Weight:** 1000 kg

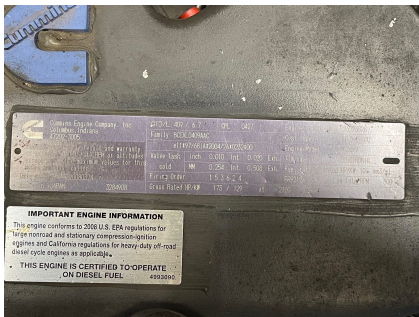
**Brand:** Cummins

**Engine Type:** Diesel

## Description

CPL 0427 EPA Model Name Two valves missing otherwise ok

## Gallery



**IMPORTANT ENGINE INFORMATION**  
This engine conforms to 2009 U.S. EPA regulations for high speed and stationary compression-ignition engines and California regulations for heavy duty off-road diesel cycle engines as applicable.  
• THIS ENGINE IS CERTIFIED TO OPERATE ON DIESEL FUEL. 4930290