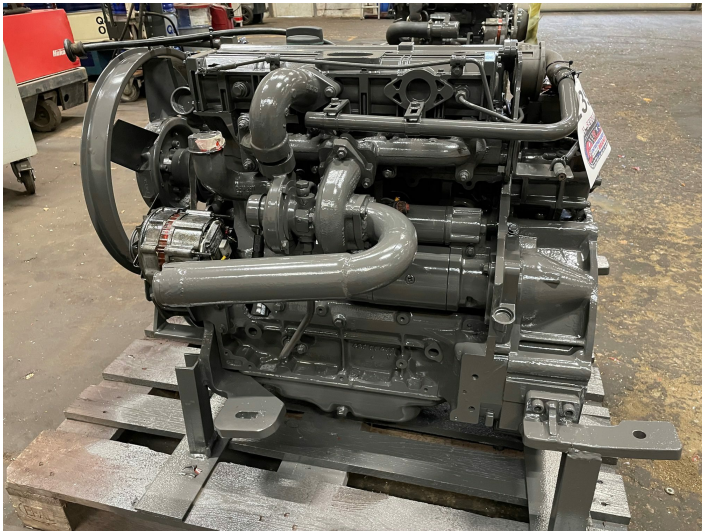


# Deutz BF4M 1012E engine - only for spare parts



**PRODUCT NO.: 23947**

**Location:** 12B

**Condition:** Used

**RPM:** 2300

**Length:** 900 mm

**Width:** 800 mm

**Height:** 950 mm

**Weight:** 600 kg

**Brand:** Deutz

**kW:** 62

**Engine Type:** Diesel

## Description

block defect Crankshaft must be grinded. Flywheel and bolts are missing ex. Kalmar forklift

## Gallery

