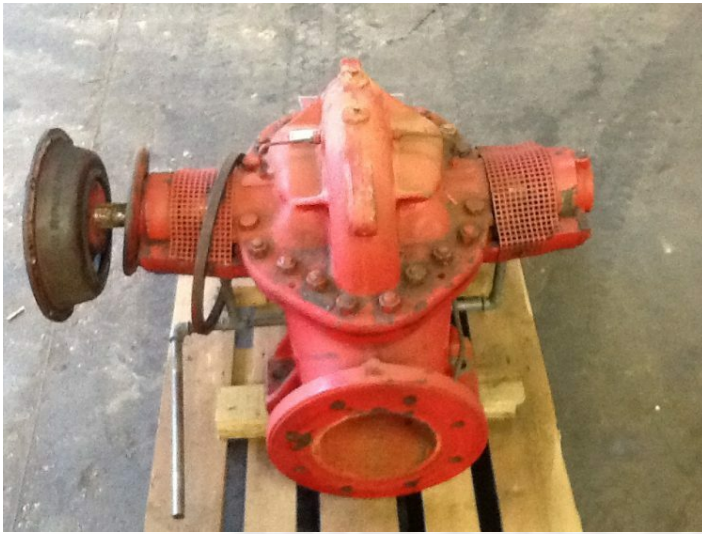


Armstrong fire pumps Model BW613 DLC



PRODUCT NO.: 19345

Serial no.: 9216799

Location: 17C

kW: 130

Pump Type: Water

Electric or diesel: EL

CFM: 288 m³/h

Description

(Worthington Simpson model 6L13) Cap.: 80 L/S = 288 cu m/H/830 Kpa - 175 HP/2900 rpm - in=200 mm - out=150 mm max. pump pressure: 288 cbm/H at 830 Kpa = 8,3 Bar = 83 Meter Water column

Gallery

