

Hydro gear typ HGM-15E-3138



PRODUCT NO.: 9614

Location: 19D

Condition: New

Brand: Hydro Gear

Description

price each (see enclosed)

Gallery


HGM MOTOR OVERVIEW

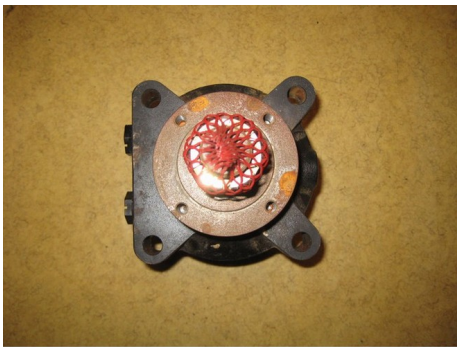
The Hydro-Gear Motors (HGM) are industrial, fixed displacement hydraulic motors available in two types: HGM-P motors and HGM-E motors. All HGM motors are orbital gearhead motors that referred to as low speed, high torque (LSHT) motors due to the large hydraulic reduction possible when coupled with the relatively small displacement P-Gears pumps or S-Series meters pumps. The HGM motors are also referred to as wheel motors because they are most commonly used for mobile applications and the shape of the motor housing allows for most of the vehicle weight to be positioned over the motor and bearings for maximum load carrying. The motor can be driven by pumps, individually, in parallel, or in series for a hydraulic circuit.

The HGM-P motor is available in 12 or 24 cc displacement and has a 1 inch tapered axle shaft. The HGM-P motor is an orbital motor with a control valve to distribute fluid to the motor gearhead out. Check valves to limit pressure at the axle end and point are standard for the HGM-P motor so no motor drain line is needed. Brake mounting holes are standard on the motor to attach an available mechanical HGM parking brake assembly.

The HGM-E motor is available in 12, 15, 18 or 24 cc displacement and has a 1.25 inch axle shaft. The HGM-E motor is an orbital motor with a disc valve to distribute fluid to the motor gearhead out. The motor also has a patented design known as "Secondary compensation" that results in smoother operation and higher efficiency. A high temperature, high pressure seal and gait are standard for the HGM-E motor so no motor drain line is needed. The motor is available in clockwise or counter-clockwise timing to optimize the system efficiency that results in better operator control, reduced oil temperature, and reduced power consumption. The HGM-E motor is lighter and shorter, and has a stronger control shaft than most motors in its class. Brake mounting holes are standard on the motor to attach an available mechanical HGM parking brake assembly.

The available HGM parking brakes are tapered drum design. The parking brakes are very effective static brakes and have some limited dynamic brake capabilities. The HGM brakes can be mounted on the HGM motors in several orientations, and the brake rotation can be positioned in several orientations during vehicle manufacturer for brake activation flexibility. Wheel hubs for the HGM motors are also available in 4 ball and 5 ball end configurations that can be used with, or without, the HGM brake assembly. Additionally, even more cost effective 4 ball and 5 ball end wheel hubs are available if a parking brake is required for the application.





HGM MOTOR OVERVIEW

Code numbers and weight

Type	HGM-12P	HGM-12E	HGM-15E	HGM-18E	HGM-24E
Rotation rev	-7172	-3050	-3051	-3052	-3053
Rotation code	-7172	-3054	-3055	-3056	-3057
Weight lb [kg]	14.6 [6.6]	21.9 [9.9]	22.6 [10.3]	23.6 [10.7]	25.0 [11.3]

Motor Series Configuration
1200 7172

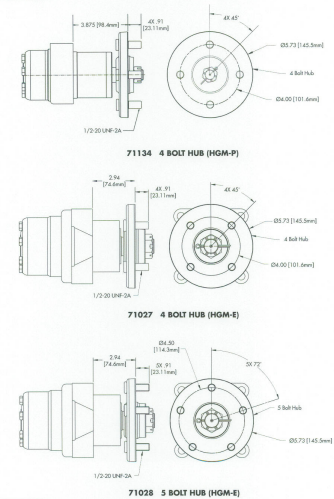
Technical data

Type	HGM	HGM	HGM	HGM	HGM
Motor Size	12P	12E	15E	18E	24E
Geometric Displacement cu in [cc]	11.87 [194.5]	12.09 [198.2]	15.14 [248.1]	18.92 [310.1]	23.84 [390.7]
Max. Speed rpm [min-1]	cont. 310 [510]	cont. 300 [500]	cont. 261 [520]	cont. 190 [300]	cont. 150 [240]
Max. Torque in-lb [daN-m]	cont. 3190 [36]	4160 [47]	4314 [51]	4602 [52]	4848 [55]
Max. Output hp [kW]	cont. 4780 [54]	5045 [57]	5644 [64]	6590 [74]	7523 [85]
Max. Pressure Drop psi [bar]	cont. 13.5 [10]	14.8 [11]	13.4 [10]	10.7 [8]	9.4 [7]
Max. Oil Flow gpm [l/min]	cont. 20 [3]	20 [3]	20 [3]	20 [3]	18 [3]
Min. Starting Torque in-lb [daN-m]	cont. 100 [6.9]	102 [7]	102 [7]	102 [7]	102 [7]
Min. Starting Pressure psi [bar]	cont. 3000 [34]	3717 [42]	4071 [46]	4160 [47]	4602 [52]
Min. Continuous Speed rpm [min-1]	cont. 3710 [42]	4071 [46]	4602 [52]	5045 [57]	5930 [67]
Shaft	1" tapered 1.25" tapered 1.25" tapered 1.25" tapered 1.25" tapered				

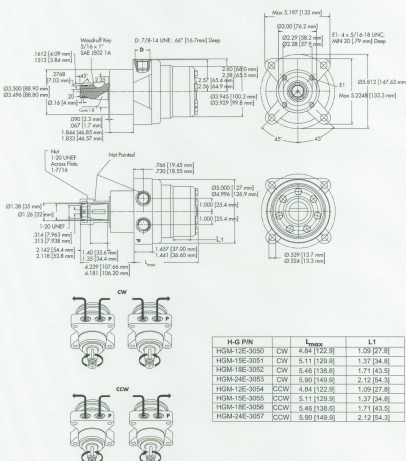
Type	Max. inlet pressure	Micro. return pressure
HGM - E Series psi [bar]	cont. 2901 [200]	2901 [200]
	peak 3046 [210]	3046 [210]
HGM - P Series psi [bar]	cont. 2538 [175]	2538 [175]
	peak 2683 [185]	2683 [185]

1) Intermittent operation; the permissible values may occur for max. 10% of every minute.
2) Peak load; the permissible values may occur for max. 1% of every minute.
3) Operation at lower speeds may be slightly less smooth.

HGM-E MOTOR HUB REFERENCE DIMENSIONS



HGM-E REFERENCE DIMENSIONS



Note: Dimensions for unpainted motors.
Front pilot point thickness: .008 in [1.50 mm]
Rear pilot point thickness: .008 in [2.00 mm]
Nut Torque: 295 lb-ft [11 lb-ft] [400N-m] [1.5N-m]

