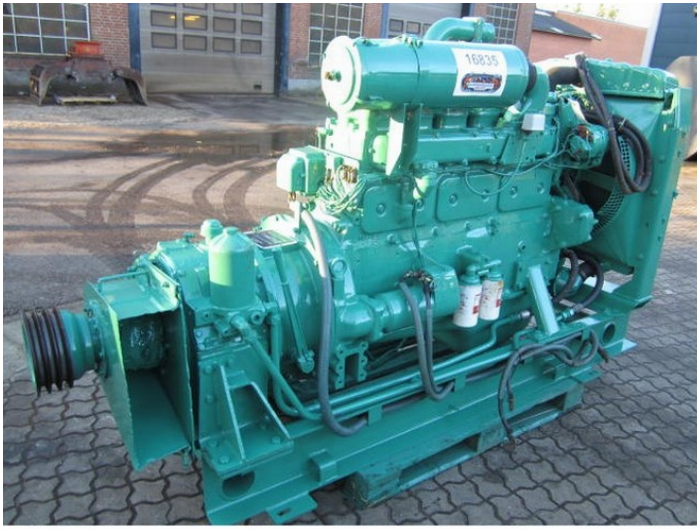


Volvo D100A with PTO



PRODUCT NO.: 16835

Serial no.: 250*17507

Horsepower: 175 hp

RPM: 2200

Brand: Volvo

Engine Type: Diesel

Description

with Twin Disc Model 6-C-1502 serialno. 534650, MS 400, max. rpm. 2300, spec. no. S-1361 - 4 kg oil pressure - SAE2 - ok and tested - ex. KL250

Gallery

