

# IFA engine 12 cyl. Tatra Diesel 930 ex. Army Dok-M



**PRODUCT NO.:** 20441

**Location:** 15A

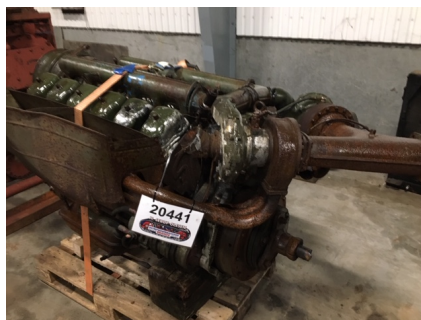
**Condition:** Used

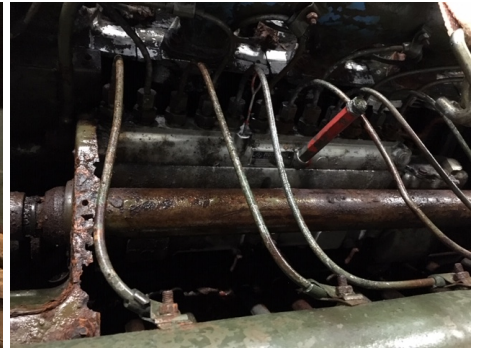
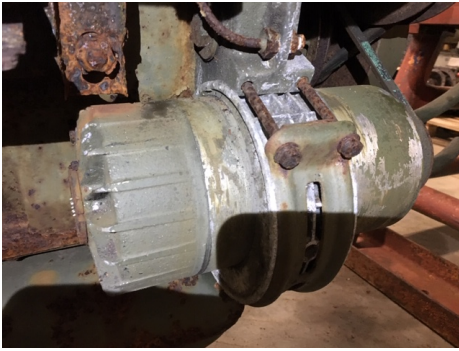
**Brand:** IFA

## Description

few hours - stucked

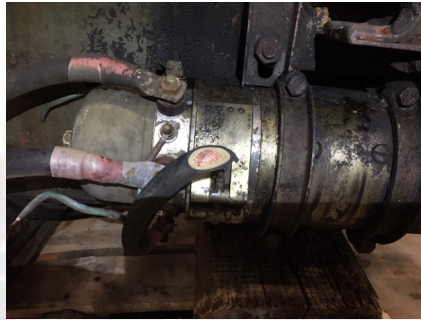
## Gallery





#### FUEL CARRIER VEHICLE

Fuel Carrier Vehicle developed on BEML-Tata VVA. Will be used to carry Xyidine i.e. 'V' fuel. This is a part of PRITHVI ground system deployed in Missile Maintenance Battery for charging the missiles.



#### Specifications

Engine	T3 836 54, 12-cylinder, V-type, Air-cooled, Multi-fuel turbocharged with direct fuel injection
Horsepower	265 kW (355 HP) @ 2200 rpm
Transmission	Synchromesh type, 10 Forward, 2 Reverse, gear shifting by manual, mechanical with pneumatic booster
Axles	Swing half axles separably sprung
Suspension	Leaf springs and telescopic shock absorbers on front axles and leaf springs on rear axles
Tyres	Tube type, size - 15.00 x 21 - 8 Nos.
Speed	80 kmph max.

ENTREPRENØRMASKIN  
BRANDE