

Liebherr LR632 - for dismantling



PRODUCT NO.: 10002826

Serial no.: 393-2250

Condition: Used

Weight: 22000 kg

Brand: Liebherr

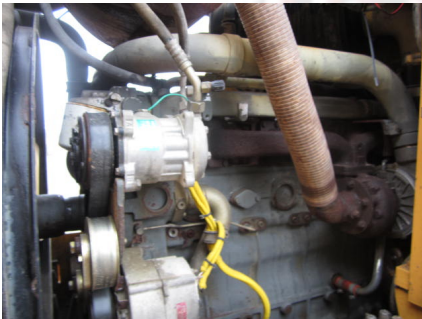
Hours: 11867

Description

4 in 1 bucket - central greasing - no power on right side final drive. SOLD: travel motors - left and right side track assey - 2 joy sticks - instrument panel+ engine.

Gallery





IMPORTANT ENGINE INFORMATION	
ENGINE NUMBER	2000 02 2738
ENGINE DISPLACEMENT (LITERS)	3.66
INJECTION TIMING (° BTDC)	18 ± 0.5
FUEL RATE (CUBIC mm/STROKE)	10 ± 1
INTAKE VALVE LASH (mm)	0.25
EXHAUST VALVE LASH (mm)	0.30
POWER HP	177
POWER KW	132
RPM	1800
ENGINE FAMILY	YLHA19 96ASA
ENGINE CERTIFIED TO OPERATE ON COMMERCIAL AVAILABLE DIESEL FUEL	
THIS ENGINE CONFORMS TO	2000
U.S. EPA AND CALIFORNIA ARB REGULATION FOR NONROAD COMPRESSION-IGNITION ENGINES.	
CODE	92
POWER KW	132
RPM	1800
ISO 6743	
CONFIGURATION	9883390
REBUILT ENGINE	
LIEBHERR MACHINES BULLE S.A. MADE IN SWITZERLAND	



Type	LR 632	Zul. Achslast vorn	
Type		Perm. axle weight front	
Type		Charge admis. sur ess. AV	
Fig.-Ident.-Nr.	33-2250	Zul. Achslast hinten	
Serial no.		Perm. axle weight rear	
N° de série		Charge admis. sur ess. AR	
Ul. Ges. Gew.	22 000	Motorleistung	
Perm. total weight	kg	Engine power	
Poids admissible		Puissance moteur	
Ujstyr	2001	Höchstgeschwindigkeit	
Year of manufacture		Max. speed	
Année de fabrication		Vitesse maxi.	
LIEBHERR - WERK TELFS GMBH			
Hans Liebherr - Straße 35, A - 6410 TELFS			
LIEBHERR			